

TOWN COUNCIL NEWSLETTER



ISSUE 1 SPRING 2024



County Councillors Ward Reports

Stay informed and stay
involved

Community Hub

New opening hours at
Ledbury Community Hub

MESSAGE FROM THE MAYOR

Spring has not quite sprung in Ledbury yet, we are still wading through puddles and donning our wellington boots!

Since my last update in the Christmas Newsletter, we have had a rather busy start to the year with events including Ledbury's Big Breakfast, Valentine's Coffee Morning, International Women's Day, Ledbury's Fantastic World Book Day, Visitors from our Twinned town, Strömstad and the Mayor's Mile.

On Friday, 8 March we held an event on International Women's Day. We had the pleasure of hosting a local author, Clare Wichbold, who has researched into Herefordshire's Suffrage history. It was a very thought-provoking evening where we all shared photographs of women who inspire us in life and collected donations for Women's Aid.



It was a delight to meet our visitors from Strömstad, Nina & Bosse Markendahl, Tomas Carlsson (Toppe), Jon Lindell, Jörgen & Marie Molin. We enjoyed hosting them at the Mayor's Meet & Greet and hearing all about their Swedish culture. We were gifted with a beautiful painting by Sead Vrbic of the Strömstad Town Council offices which will be hung in the reception area of Ledbury Town Council for all to see. Whilst visiting, the Strömstad guests held a concert at the Rugby Club, called Piaf and Friends in conjunction with the Ledbury singers which was brilliant! See "Strömstad Spotlight" page for further information.

On Sunday, 14th April 2024 we held the annual Mayor's Mile event in conjunction with Ledbury Swifts and Ledbury Town FC. We would like to extend our thanks to Steve Onions in particular for helping us organise this event and a big thank you to the Ledbury Harriers for their support. We had all ages join us from the under 6 football team to over 80 and we raised over £500 which will be equally split between the football club and the Mayor's two chosen charities.

Plans are now in full swing for my last Charity event of my Mayoral year, Ledbury's Got Talent taking place on Friday, 3 May 2024 at John Masefield High School & Sixth Form Centre. This will be my last opportunity to raise as much money as possible for my chosen charities, Megan Baker House and Close House Projects. We are very excited about our finalists, and we hope this will be a show that all will remember! The tickets for this community extravaganza are now live. Please follow this link <https://www.ticketsource.co.uk/.../2024.../19:00/t-yakkeok> to purchase yours.

I have had a great year as Mayor and I would like to thank all the wonderful organisations in Ledbury for the work they do for our town. I am sure my successor will have as much fun as I have had.

Lean on Ledbury!

Helen I'Anson
Mayor of Ledbury 2023/24



THE MAYOR OF LEDBURY'S PHOTO ALBUM



LEDBURY'S GORGEOUS GREEN SPACES



Tree Felling Along Knapp Lane

In recent weeks, residents of our community may have experienced some inconvenience due to the closure of Top Cross for utility works. However, there's a silver lining to this disruption: it provided an opportunity for essential tree felling along Knapp Lane.

Thanks to the road closures, a local and dedicated team of tree surgeons were able to safely remove a stretch of trees that posed potential risks to public safety. These trees had been identified as either afflicted with ash dieback or located too close to the road, presenting a hazard to passing vehicles and pedestrians alike.



While such measures may cause temporary inconvenience, they are crucial for maintaining the safety and aesthetics of our beloved community. By proactively addressing potential hazards, we ensure that our green spaces remain not only beautiful but also safe for everyone to enjoy.

We extend our gratitude to residents for their patience and understanding during this necessary maintenance work. Your cooperation is invaluable as we continue to strive for a safe and vibrant environment for all. Further works are planned this summer to improve some of the benches located within the Wood and to provide another dog waste bin near to the entrance of North End Car Park. For further updates on community maintenance projects and initiatives, stay tuned to our newsletter and community channels.

New Street Cemetery - Update on Garden of Remembrance



Residents will be pleased to note that a new Garden of Remembrance has recently been put in place at the Cemetery, as space was running out in the existing Garden of Remembrance. A consultation will take place later in the year so that residents can have their say on what type of Scatter Garden should be built at the Cemetery.

A programme of works has already started at the Cemetery to paint all the metal benches and many shrubs and evergreens have also been pruned back with additional works planned for the interior of the Cemetery Chapel including a lightning protection test and inspection.

On 13 May 2024, a Health and Safety Audit of Headstones will commence in the Cemetery.

Those headstones which are identified as being in a potentially dangerous condition will be categorised in accordance with the Memorial Safety Programme and the appropriate action will be taken by trained operatives. Ledbury Town Council would ask anyone visiting the Cemetery not to touch any of the memorials or attempt to reposition or move them. Should anyone have any queries, please contact the Council on 01531 632306.

Ledbury Town Council would kindly remind those visiting the Cemetery to keep their dogs on leads at all times.



Playful Additions: Discover What's New at the Recreation Ground



Ledbury Town Council is thrilled to announce the installation of the brand-new Timber Climber, located at the far end of the Recreation Ground, adjacent to the basketball court.

Plans are underway to introduce another exciting piece of play equipment to the existing play area later this summer, further enriching the recreational opportunities available to families in our community. In addition to these enhancements, the Town Council has also undertaken the revitalisation of our recreational space by giving the benches a fresh coat of paint, adding a splash of colour and comfort for visitors enjoying the park's serene ambiance.

The football posts are next on our list for refurbishment, with plans to give them a fresh new look later this year.

Stroll among the Bluebells - Dog Hill Wood

As spring blossoms in our beautiful town of Ledbury, there's no better time to explore the natural wonders right on our doorstep. One such treasure is Dog Hill Wood, where nature puts on a breath-taking display of bluebells that is not to be missed.

Green spaces like Dog Hill Wood are not just beautiful; they are essential for our well-being and the health of our environment. They provide habitats for wildlife, improve air quality, and offer a place for residents to connect with nature and enjoy outdoor activities. Preserving and cherishing these spaces is vital for the health and happiness of our community.

We encourage all residents and visitors to take some time to explore the beauty of Dog Hill Wood this spring. Whether you're a nature enthusiast, a keen photographer, or simply looking for a peaceful retreat, Dog Hill Wood has something for everyone.



LEDBURY CELEBRATION PARTNERSHIP

Ledbury Town Council, The Food Group, and Ledbury Poetry Join Forces for Ledbury Celebration

We are thrilled to announce a new and exciting partnership between Ledbury Town Council, the Food Group, and Ledbury Poetry, aimed at enhancing one of our town's most cherished events - the Ledbury Celebration.

Ledbury Celebration is a beloved tradition, typically held on the concluding day of the Poetry Festival in July, within the confines of St Katherine's car park, which includes the new Town Square. This vibrant event has become a highlight for both residents and visitors alike, offering a delightful array of attractions including a bustling market showcasing the finest local produce, accompanied by captivating musical performances, enchanting dance displays, and inspiring poetry readings.

Year after year, the Food Group and Poetry Festival have collaborated seamlessly to ensure the smooth and successful coordination of this special occasion. Now, we are thrilled to announce that Ledbury Town Council, the Food Group, and Ledbury Poetry are joining forces to take the Ledbury Celebration to new heights. This exciting partnership will bring together the collective expertise, resources, and creativity of three esteemed organisations, with a shared goal of making the Ledbury Celebration even more memorable and enjoyable for all.

We are incredibly excited about the possibilities that this partnership holds, and we invite the entire community to join us in celebrating the magic of the Ledbury Celebration. Stay tuned for more updates and announcements as we embark on this journey together.

This FREE event will run from 11am to 4pm with entertainment from 12 noon on Sunday 7 July 2024

If you are a locally based food producer or local street-food vendor using local produce and are interested in a stall at the event please contact us at ledburycelebration@gmail.com.

Please contact us if you would like to help us setting up, stewarding or taking down after the event – Griff at 01531 633637. Your help makes these events smooth-running and successful – even an hour or two helps.



Discover what local groups and organisations do at

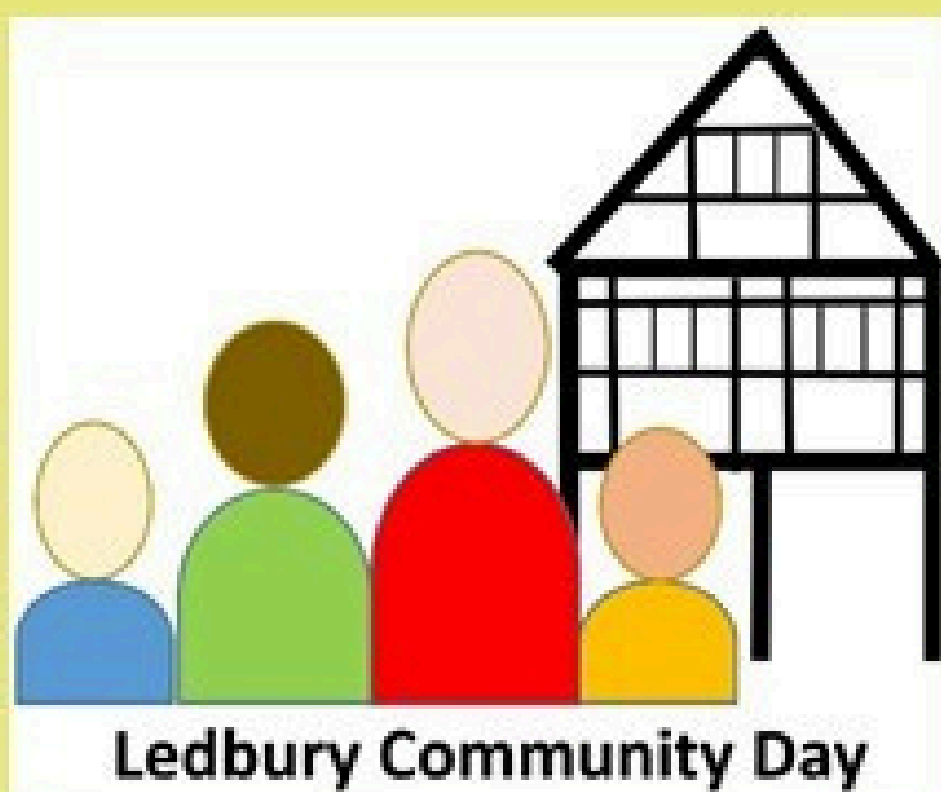
Ledbury Community Day

*Saturday 8th June
around Ledbury Town Centre*

60 local groups and organisations will be there
to welcome you, and tell you more about
what they do

Lots to discover at the
Burgage, St Katherine's and
Community Halls, Master's
House, Market House, Heritage
Buildings, Bowling Club, Poetry
House and elsewhere

**THE GREAT
BIG GREEN
WEEK** 



Find out more at

www.ledburycommunityday.org.uk



With thanks to Ledbury Town Council, Eastnor Lodge Charitable Trust, and Love Ledbury for support

VOICES OF THE DISTRICT

WARD COUNCILLORS' REPORTS



COUNCILLOR STEF SIMMONS

Title: Vice Chairperson of the Council

Party: The Green Party

Ward: Ledbury South

Parish: Donnington ; Eastnor ; Ledbury (South)

Annual Budget

The annual budget for Herefordshire Council was set at the February Full Council meeting with the March Full Council meeting confirming the precepts for Parish and Town Councils, Fire and Police. Various concerns were raised at the continued squeeze on local authority finances, the lack of multi-year settlements from Government and the unsustainable pressure from increasing demands for adult and child social care. Nearly 70% of Herefordshire Council's revenue budget is allocated to adult and child social care, with only 17% allocated for other statutory provision such as refuse and recycling and highway maintenance.

Local Spatial Plan, Local Transport Plan and Minerals and Waste Plan

The Minerals and Waste Local Plan for the County has been approved and adopted following examination by the inspector and approval by Full Council. This sets the policy and spatial strategy for minerals and waste in the county.

The Local Transport Plan review is now underway following a delay whilst awaiting DfT Guidance, which has now been shelved. The objectives are being set and I urge anyone with concerns about travel and transport within, to and from Ledbury to engage at this stage.

The Local Spatial Plan review is also underway with draft Local Plan 2021-2041 undergoing its Regulation 18 Consultation. This will set out the housing and employment land allocation for Ledbury.

I am deeply concerned at the proposed allocation of an additional 450 houses in a strategic land allocation off the Gloucester Rd between Leadon Way and Parkway and will be responding that I do not support this level of growth within the plan period to 2041 given recent allocations and developments in the area.

I am deeply concerned at the proposed allocation of an additional 450 houses in a strategic land allocation off the Gloucester Rd between Leadon Way and Parkway and will be responding that I do not support this level of growth within the plan period to 2041 given recent allocations and developments in the area. The policy can be found on the next page.

Policy LEDB2: Land to the south of Ledbury

Land to the south of Ledbury will bring forward a master-planned sustainable development on 25 hectares of land and will be expected to deliver:

Housing requirement:

- 1. A minimum of 450 new homes at an average minimum density of 30-35 dwellings per hectare which includes a mix of market and affordable house sizes and types in accordance with Policy BC1 and reflect the latest Herefordshire Housing Market Needs Assessment;
- 2. An affordable housing target of 35% of the dwelling total must be affordable housing to meet local needs;
- 3. A minimum of 5% of the dwellings being made available as dedicated serviced plots for self or custom build housing in accordance with Policy BC3;

Access:

- 4. Provide important linkages to the town at an early stage. This is expected to be in the form of an attractive, easily accessible, safe and direct crossing on Leodon Way to connect with the town;
- 5. Transport Assessments, Travel Plans, Environmental Statements and other supporting documents must be provided to ensure that the impact on the existing strategic road network and its junctions will not result in any detrimental impact to its safe operation. Suitable junction capacity assessments and appropriate levels of mitigation will be required;
- 6. And look to future-proof sustainable transport modes and accessible links to support housing growth within and beyond the plan period;

Community:

- 7. An appropriate, distinctive, new sustainable community facility;
- 8. A small scale neighbourhood retail facility to enable easy, active and safe access to day to day needs;
- 9. Provide a Health Impact Assessment, to ensure that the health and wellbeing of future residents is maximised;
- 10. Financial contribution towards education provision;

Design and open space:

- 11. A development proposal which respects the landscape setting, including minimising any impact to the distinctive and unique nature of the Malvern Hills National Landscape;
- 12. Green infrastructure corridors that give structure to the development, maximise connectivity by providing attractive routes to walk, wheel and cycle, and provide a strong natural edge to the development to maintain the separation from Parkway;
- 13. On-site delivery of an appropriate level of multi-functional open space which should include semi-natural green space together with measures for its on-going maintenance, and provision for allotments or community garden;
- 14. A comprehensive Sustainable urban Drainage System (SuDS) which includes measures such as rain gardens and swales to manage ground and surface water drainage and safeguard against any flood risk;
- 15. Siting, scale, massing and layout and materials that are sympathetic to the character and distinctiveness of Ledbury and align with the requirements of the Ledbury Design Code;
- 16. Proposals for biodiversity net gain (BNG) must be provided as part of the development. The layout and siting of the scheme should avoid any negative impact on biodiversity. The site must deliver 20% BNG, as measured by the statutory biodiversity metric, and which should preferably be located within or adjacent to the development site. If demonstrably not practical to deliver the required level of BNG on-site, details of a suitable and appropriate off-site solution for the remaining net gain should be provided, or, as a last resort, statutory biodiversity credits should be purchased. For significant on-site gains, and all off-site gains, BNG must be maintained for at least 30 years after completion; and

Heritage assets:

- 17. Assess the archaeological significance of the area to safeguard heritage assets and inform development proposals.

Current Consultations

- Consultations on the Draft Local Plan and Local Transport Plan have commenced. A consultation event in Ledbury took place on Tuesday 26th March 9:30pm-12noon at the Market House. Cllr Harvey and I have requested additional events and the spatial team are looking at running additional evening events.
- Renewal of Public Space Protection Order (PSPO) for alcohol consultation runs from 18th March to 28th April 2024.
- Review of gambling policy consultation, 8th March to 18th April 2024.
- New policy for licensing of sex establishments consultation, 27th February to 24th March 2024.

Ledbury Youth

I have been working to try and improve provision of and access to youth services in Ledbury. As part of this I have attended a third meeting of organisations who are providing youth services or have funding to support youth services within Ledbury.

This fed back headline results from the recent Ledbury Youth listening survey. This collated over 600 responses from young people in our town. Following this two drop-in sessions were held on Tuesday 26th March (12pm-4pm St Katherine's Hall, and 5pm-7pm The Poetry House) to work more closely with young people in creative pop-up's to find out what they want to see and do in Ledbury.

In addition I am supporting allocation of s106 funding to provide new football facilities and funding for projects working with pupils at John Masefield High School and Ledbury Primary Schools.

LEDBURY LISTENING: CREATIVE POP-UPS

Aged 9 to 18?
Come along to our drop-ins at St Katherine's Hall and Ledbury Poetry House **on Tuesday 26th March.**

Free creative sessions. Get involved in photography, making zines, podcasts, poetry + have your say about growing up here

- 12pm-4pm @ St Katherine's Hall, High Street, HR8 1DZ.
- 5pm-7pm @ The Poetry House, Barrett Browning Institute, HR8 2AA.





Dymock Road Flooding



Since early January I have been pushing for funding and an engineering solution to the pluvial flooding issue on the Dymock Rd. I am pleased to report that I attended site today (21/03/24) with BBLP to view drainage engineering works being undertaken. All water has been pumped off to enable survey work that showed the clay land drainage pipes have failed and a large section of new drainage ditch is being dug to connect the low point in the carriageway to alternative connections. The carriageway condition has also been reported for repair works. I'm hopeful these works will resolve the issue but will monitor performance and ensure gully cleaning is conducted.

Hawk Rise - Attenuation Pond, Tree replanting, Dog Control and Fouling, Bin provision and Bus Service

Following a walk around the estate, and after discussions with residents, I raised concerns with council officers about dead/dying trees, dog fouling and lack of water within attenuation pond despite recent record wet weather.

The planning case officer and tree officer requested replanting of the trees along the boundary footpath behind Hawk Rise and this has been commenced. The fenced play area within the centre of the estate has now been included within the map of the County Dog Exclusion Order.

In addition the Environmental Health Team have placed 'no dog fouling' signs on the estate paths to enable enforcement action where dog faeces is not removed by owners. The site drainage and operation of the attenuation pond is being investigated and I hope to be able to provide an update on this in my next ward report. I have contacted the local bus service operator, transport officer and s106 delivery officer to ascertain the feasibility and potential for extension of bus services to Hawk Rise. Currently there are no plans by the operator to extend the service. S106 money is being provided to enable installation of bus shelter on nearby Martin's Way.





COUNCILLOR LIZ HARVEY

Title: Group Leader of the Independents for Herefordshire; Chairperson Scrutiny Management Board; Vice-Chairperson Children and Young People Scrutiny Committee

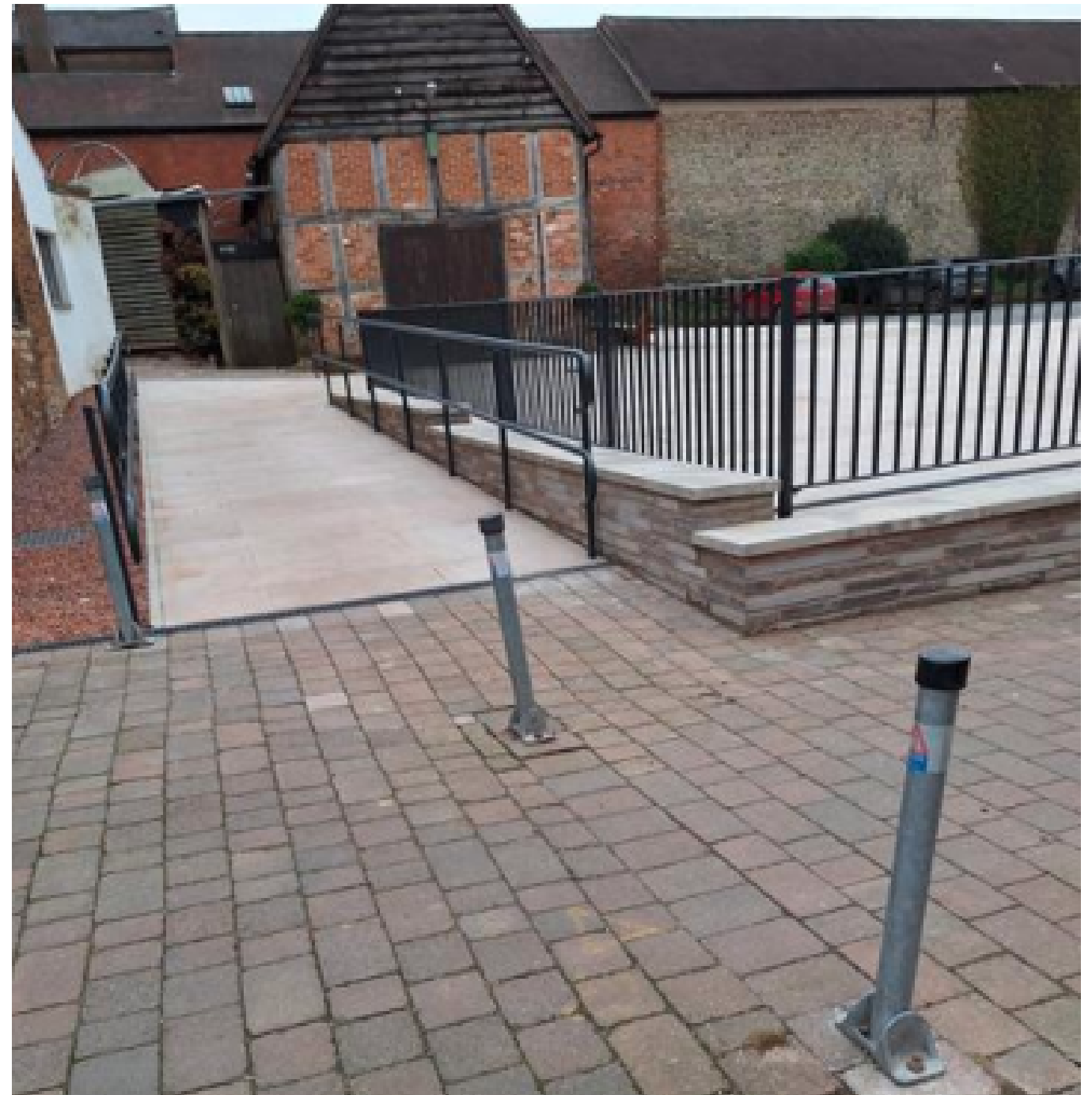
Party: Independents for Herefordshire

Ward: Ledbury North

Parish: Ledbury (North) ; Wellington Heath)

Masters House Landscaping

Works on site were completed, as anticipated, in February. A formal opening for the square is to be planned. Discussions and consultation has been held with the Town Council about the options under consideration by Herefordshire Council for the licensed use and hire of the new space. Local businesses have been reminded of the need to abide by the terms of their access permissions for vehicles across the top end of the square. I have requested that the unnecessary, wonky and unsightly bollards are addressed – see photo. Since the square was completed there has been an incidence of vandalism, with window/s in the Master's House broken by people throwing the loose chippings from the porous drainage area at the rear of St Katherine's Hall.



McCarthy & Stone Development of 'Masefield's Meadow'

The deadline for making written submissions to the appeal has now closed (14 March). The reference for the appeal is: Appeal 223248 - APP/W1850/W/23/3334961 - Green Acres The Homend, LEDBURY - P223248/F

The Inspector appointed to decide the appeal is T Law BSc MSc MRTPI, and the hearing will open at 10.00am on Wednesday 29 May 2024. It is likely to be completed in a 1 sitting day(s) and the format of the event will be an in-person, face to face event. The venue is likely to be in Hereford but the location is yet to be confirmed.

The statement of case submitted by Herefordshire Council in defending the decision to refuse is available to view here: <https://myaccount.herefordshire.gov.uk/documents?id=92999ebb-eabf-11ee-907c0005056ab11cd>

The viability report considering the case made by the developer to justify their refusal to deliver affordable housing and contribute S106 monies towards the provision of community infrastructure was withheld from the Planning Committee. It has been made available to the appeal and can be viewed here: <https://myaccount.herefordshire.gov.uk/documents?id=92adfd21-cfd6-11ee-9078-0005056ab3a27>

Viaduct Housing Development

Bloor have requested an amendment to the planning condition requiring them to instate the extension to the Riverside Park before the first dwelling is occupied. The reason for this is that their built-out rate has meant that homes are almost ready for occupation, but the ground is too waterlogged for the necessary works to be undertaken. The suggestion is that the condition is changed to allow up to 50 homes to be occupied before the park is ready for use.

Bloor have provided assurance that they will commence work as soon as ground conditions allow, and that the 50 house figure is proposed to provide a reasonable buffer to allow for the sort of heavy rainfall events in early summer that we have experienced in recent years. I am content that this is a reasonable adjustment to make to the conditions and have signalled I have no objection.

The toucan crossing for pedestrians and cyclists by Ballard Close on the Hereford Road is under construction. This is another required installation ahead of the first house being occupied on the development site – see FP1 in the table below. I have asked Bloor to confirm that the essential footpath and cycleway links through the railway embankment to their development site will be installed and accessible as soon as the crossing is commissioned. I am concerned that this may not be the case, but I await a response from the developer.

Table 6: Trigger Points for Wider Highway Infrastructure

Phase	Type	Description	Start Date	Completion Date	Trigger Point
S278 (1)	Bromyard Road Highway Works	Site Access Roundabout on Bromyard Road and footpath link to Bromyard Road Trading Estate from emergency access. Initial construction access via existing field access.	May 2023	Spring 2024	Prior to first occupation
S278 (2)	Bromyard Road / Hereford Road / Homend Highway Works	Improvement works at junction including signalisation of junction with new left turn lane on Hereford Road (onto Bromyard Road) and controlled pedestrian crossing to Station.	Summer 2024	Winter 2024	Pre-occupation of 100/150 th dwelling
S278 (3)	Hereford Road Highway Works	Package of measures including introduction of toucan controlled pedestrian crossing (including links to FP1), uncontrolled crossings, and new 3m foot and cycle path, widening, surfacing and lighting to Town Trail Link to the east of the discontinued railway bridge.	Spring 2025	Winter 2025	Pre-occupation of 250 th dwelling
FP1	Foot and Cycle Path	New foot and cycle path running along eastern edge of the canal connecting Bromyard Road and Phase 1 of the development to the Viaduct and FP2. New foot and cycle path through the Viaduct Tunnel to Ballard Close, and new toucan controlled pedestrian crossing to the southern side of Hereford Road. Surfacing, widening and lighting of section of public footpath (Ref 2818) to Town Trail.	Summer 2023	Winter 2023	Prior to first occupation
FP2	Foot and Cycle Path	New foot and cycle path extending under the Viaduct through to Hereford Road / New Mills Way roundabout.	Summer 2024	Spring 2025	Pre-occupation of 250 th dwelling

Flooding on the Bromyard Road

Problems with blockages to the drainage infrastructure under the highway at the station junction have continued. Drainage layout drawings have been provided and the capacity of the existing drainage pipework is being investigated. I have requested that any upgrade to the pipework is coordinated so that it is undertaken at the same time as the roadworks to install the signalised junction at the station to accommodate the additional traffic from the Bloor development.

Town Centre Road Closures

Inevitably, the closure of the Top Cross in all directions for a week and the four weeks of roadworks at this point in the town cause considerable disruption locally and hit many town traders very hard. I have been advised that there are no funds available to compensate businesses for the impact of these works on their trade. However, I have requested that the funds provided to the County BID for the promotion of Herefordshire as a visitor destination be used to highlight the attractions in Ledbury and its surrounding area. It may be helpful for the Town Council's Events and Tourism working party/s to liaise with the BID. I have also asked whether support is available to provide technical assistance to small and micro businesses to make better use of the Local Free application and its ability to provide push marketing messages to visitors.

TRO Consultations – Woodleigh Road

It is disappointing that the reinstatement of the safe pedestrian walkway between New Street and the Town Trail has been rejected as the result of a number of objections received during the second round of consultation. Families walking to school will continue to have to take their chances at peak traffic movement times and share space with cars moving in both directions along this section of road. It was concerning to see comments online that the measures were unnecessary as no-one had been injured in an accident at this location. Personally I do not consider that to be the yardstick any of us should be using when considering where and how to make it safer to walk and to cycle around the town.

Consultations

The following consultations are live on the Herefordshire Council website at the following location:
<https://consultations.herefordshire.gov.uk/consultations>

- ☒ Draft Herefordshire Local Plan (Regulation 18) consultation – ends 24 May
- ☒ Local Transport Plan consultation – ends 21 May
- ☒ Renewal of Public Space Protection Order (PSPO) for alcohol consultation – ends 28 April
- ☒ Proposed increase to taxi licence fees 2024-25 consultation – ends 11 April
- ☒ Review of gambling policy consultation – ends 18 April

Local Plan Update:

The face-to-face consultation roadshow for the Local Plan update attended the market in Ledbury on 26 March, following little or no advance publicity. Ledbury is proposed to take an additional 600 homes to the south of the town to consolidate the existing unplanned urban extension which has grown up there since 2015. It is also proposed that the employment land in the area of the Heineken plant the other side of the river is extended by 3ha to 18ha. It is important that local people get to properly consider these proposals for further growth of the town. It is also important that planned policy changes regarding development in villages, the open countryside and in the National Landscapes (previously known as AONBs) are given consideration. These changes are likely to impact on the requirement for development in the market towns and the city. I have requested that officers make the display materials available to enable a more sustained and meaningful display of the plan and policy changes to be organised locally. I would hope that the council could consider making the panelled room available for the display of these materials.



COUNCILLOR JUSTINE PEBERDY

Party: The Green Party

Ward: Ledbury West

Parish: Ledbury (West)

Masters House Landscaping

Work on the construction of the shared cycle footway at the back of Golding Way, has resumed following meetings with residents of Golding Way, Andy Byng (Highways), and Chloe Smart (Planning). It was agreed that the statutory consultations had been carried out, and recognised that the residents felt that the consultation process is insufficient. As planned, the path will be tarmacked and lit to encourage pedestrians and cyclists. The option of using red lighting to lessen the impact on wildlife is being considered.

LTC will have received information from HCC announcing the release of additional money for the Lengthsman Scheme, PROW funding and Local Drainage Funding. LTC should consider a list of priorities for PROW funding now in order to submit an expression of interest in early April. One consideration, requested by a resident through Councillor Sinclair, could be to improve access (currently steps) onto the riverside walk from Little Marcle Road.

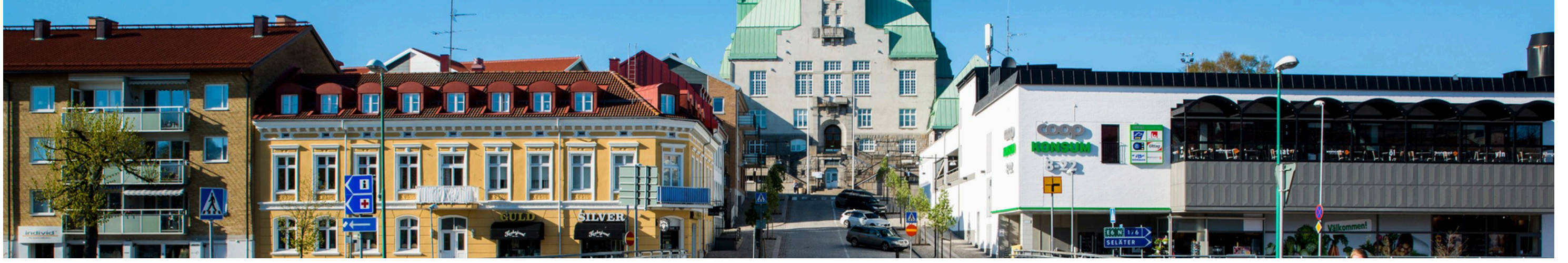
A recent S106 briefing highlighted how the S106 delivery team, following consultation with the Scrutiny Management Board, have made changes to speed up the rate of clearing a large back log of funded projects. They have introduced various highways 'packages' for traffic calming measures and safer school routes which can be more quickly and cheaply employed than through TROs, including SIDS (speed indicator devices), road markings and '20mph when lights flash' guidelines around schools. All measures introduced are followed up with traffic speed and volume surveys to assess efficacy.

HCC are working with the Police and Crime Commissioner to build safer communities and prevent crime. Some of the projects receiving funding, which could benefit Ledbury, include:

- Employment of a family support worker at John Masefield to work closely with families and young people who have emerging problems or additional needs that require targeted support.
- A youth participation project led by Rural Media that will see young people create impactful social media content to generate conversations about positive masculinity, healthy behaviours, personal safety and productive role modelling.
- Safe and Strong – delivered by CLD Trust to support young people struggling with mental health issues

We can contribute to The Local Transport Plan consultation process here up until 21 May 2024 - <https://online1.snapsurveys.com/ltpfeedback> This feedback will help to shape the plan before a wider public consultation process is held later in the year. Thank you to Helen for suggesting the Councillor Coffee and Catch Up. It was helpful to meet town councillors with dedicated time to share information and ideas. I'm grateful for the opportunity, which will be useful to me even if there is just one councillor in attendance each time whose brains I can pick for half an hour!

STRÖMSTAD SPOTLIGHT: LATEST NEWS AND DEVELOPMENTS



CORRESPONDANCE FROM THE MAYOR OF STRÖMSTAD

The starting signal of the summer season means an increased number of visitors to the Koster islands and the national park “Kosterhavet” (the Koster sea), Sweden’s one and only marine national park. I do hope that at least some of you will have the opportunity to visit this stunning area just outside Strömstad.

Easter also means the start of “entertainment-scale-up”. The supply of live music, food offers as well as good shopping increase as the days gets longer and brighter. The cultural scene is also widening. An example: Just west of Strömstad, on the island Nord Långö, the spectacular life of a fisherman’s daughter, Hilma Svedal, is turned into a movie. At Nord Långö, she built “Alaska”, a stone park with towers and viewpoints. A lifetime achievement inspired by 30 years of gold-digging in America. Don’t miss the movie, and if you have the chance to go there – don’t miss the summer café! More information on how to experience Strömstad, check out: Welcome to Strömstad & Kosterhavet (vastsverige.com)

Back to twinning activities - I look forward to welcoming the Ledbury Swifts in summertime as well as members of the Twinning town association. I’m also happy for the birth of a local Twinning association in Strömstad – in February, the first meeting was held. Hopefully, this will make our towns even more equal when it comes to twinning activities and contacts.

Warm Greetings from Strömstad!

WHAT DOES ‘TWINNED’ MEAN?

The Towns of Ledbury and Strömstad were formally twinned in April 2000 and marked over twenty years of friendship in July 2022 with celebrations on both sides of the North Sea. The focus is the sharing of friendship, culture and special interests such as music and sport with the emphasis on young people

WHAT DOES THE LEDBURY STRÖMSTAD TWINNING ASSOCIATION DO?

Over the years, the Association has provided support to numerous local groups visiting Strömstad, including the Swifts, various music groups, schools, Rotary, and many others. Part of the associations role is to support visits and put groups in contact with partner groups in Strömstad. All part of promoting social, cultural, and general understanding between the two communities. Ledbury Swifts are the Association’s greatest and most consistent ambassadors, with boys and girls going to Strömstad to play on an annual basis for over twenty years. The Committee in Ledbury meet regularly, and updates are shared with Strömstad. The Ledbury Committee has a Facebook page and produces regular newsletters for members.

WANT TO KNOW MORE?

Intrigued? For more information about the Strömstad Association and how to become a member, please contact Jill Jupp at jill_jupp@hotmail.co.uk.

THE STRÖMSTAD PHOTO ALBUM



COUNCIL CORNER

16TH CENTURY PAINTED ROOM

It is now 35 years since the discovery of the 16th century wall paintings in an upstairs room in the Town Council Offices in Ledbury. They were first opened to the public in 1991 and the 16th Century Painted Room is now open to visitors for the new season. Last year we were open from the beginning of March to the end of October on several days a week. We welcomed about three and a half thousand visitors during that time and took part in special events such as World Book Day and Heritage Open Days.

This year we also re-opened in March and are currently open Monday to Thursday and Saturdays. We have extended our opening time a little though, now closing at 4.30p.m. instead of 4.00p.m. However, we hope to increase our opening days to include Fridays and Sundays during the busier parts of the season. We look forward to seeing you and your visitors at some time this season. We are free to come in but welcome donations to help us to keep the room open for other visitors. We also have a little shop area with some souvenir items to purchase including cotton bags, china mugs, bookmarks, key rings, quill pens and postcards. If you're looking for an unusual gift, why not come and take a look at our selection? You will also find the for-sale items available in the Town Council Office Reception in Church Lane if you come on a day or at a time when we are not open.

Our entrance is at the back of the Town Council Office, first door on the right in Church Street. Our guides look forward to welcoming you soon.

Our current opening hours are:

Monday to Thursday and Saturday 11.00a.m. to 1.00p.m. and 2.00p.m. to 4.30p.m

Bank Holidays are usually 1.00p.m to 4.00p.m but this is subject to staff availability. We do not open on August Bank Holiday Monday due to it being carnival day in the town.



EXCITING JOB OPPORTUNITIES AVAILABLE NOW!

Ledbury Town Council is looking to recruit Tour Guides to join our small friendly team to showcase Ledbury's 16th Century Painted Room.

The roles are open to applicants who may be looking to undertake either some voluntary work or who would prefer to be a permanent member of the team.

The Painted Room is open from 1 March – 31 October between the hours of 11.00am and 4.30pm on Monday to Saturday and between 1.00pm and 4.00pm on Sunday. Flexible hours are offered to suit (part or full time) with no lone working.

There is also the opportunity to participate in events during the year such as Heritage Open Days (HODs), World Book Day, Children's Activity Days, giving talks to small coach parties, offering tourist information as well as giving visitors the opportunity to visit the Market House.

If you have an interest in the Heritage of Ledbury, then this could be the job for you!

The salary will be the National Minimum Wage and full training will be given.

For an application pack please contact the

Deputy Clerk:

Tel: 01531 632303

deputyclerk@ledburytowncouncil.gov.uk



Ledbury Carnival at the Ledbury Community Day

Come and visit the Ledbury Carnival stand in the Community Hall from 10am to 2pm. We will have an exhibition celebrating the last 50 years of carnival in Ledbury with photographs, trophies and other memorabilia. Sure to be great fun looking back...

Talk to us about taking part this year, making a donation, volunteering on the carnival committee and taking the carnival through the next 50 years.

We look forward to seeing you!

USEFUL INFORMATION



ADDRESSING A COMMON CONCERN: POTHOLES

Potholes can be a nuisance, but together, we can make our roads safer and more enjoyable for everyone. If you come across a pothole, reporting it is simple and can make a big difference.

Below, you'll find a list of steps to report a pothole. Additionally, our website offers other useful information to help keep our community informed and our roads in top condition.

Visit: <https://www.ledburytowncouncil.gov.uk/en-gb/useful-services> for more details.

Reporting a pothole

In the County of Herefordshire, Highways England are only responsible for maintaining , the M50, A40 and A49. All other roads are maintained by Herefordshire Council, via their Contractor Balfour Beatty. To report a pothole in Herefordshire, please follow these steps:

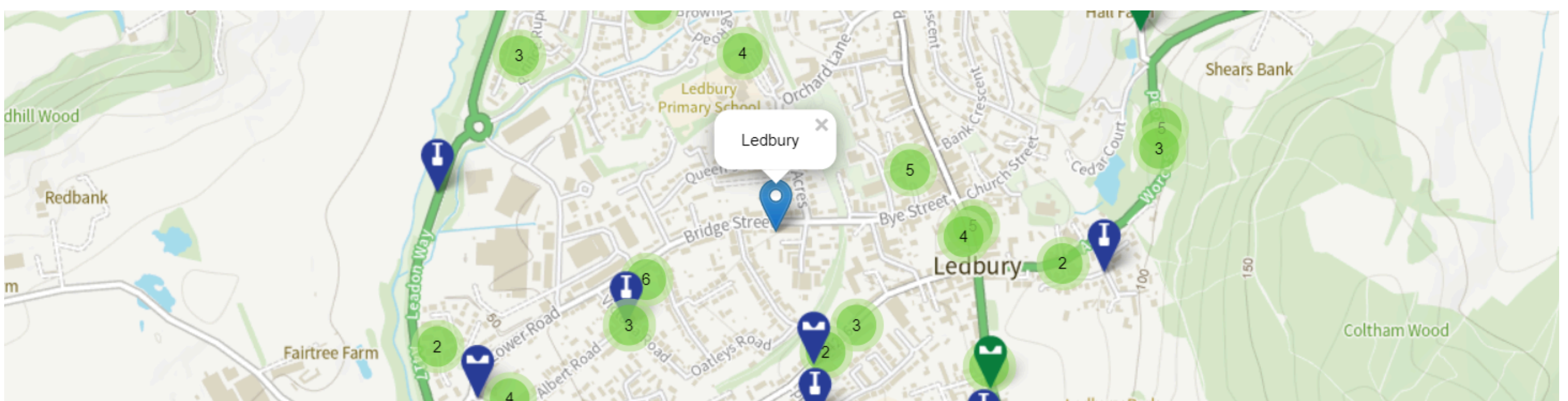
- 1. Visit the Herefordshire Council website.**
- 2. Look for the "Report a pothole" feature or use the provided link.**
<https://www.herefordshire.gov.uk/roads-1/pothole-road-defect-progress-map>
- 3. Enter the postcode or street name in the search box.**
- 4. Once you've located the pothole's position, click to drop a yellow pin to mark its location.**
- 5. Submit the report.**

This process will help the appropriate authorities address the issue promptly. Thank you for your contribution to improving road safety in Herefordshire!

Pothole and road defect progress map

The map below shows defects on Herefordshire roads and pavements which are in the process of being resolved, or which have been completed within the last three months. You can check whether a problem has already been reported before you report a pothole or road defect online or check the progress of a reported incident usin the link below

<https://www.herefordshire.gov.uk/roads-1/pothole-road-defect-progress-map>



LEDBURY COMMUNITY HUB



LEDBURY COMMUNITY HUB TO OPEN ITS DOORS WITH REGULAR HOURS

After hosting several successful events, the hub is now in the position to offer regular hours, providing a welcoming space for the community to meet over tea, coffee, and cake.



The vision for the hub has always been to create a space for regular events, 'pay what you can' food options, and more. With the official opening, this vision is becoming a reality.

The hub's regular hours will be as follows:

- Thursday: 10:30 AM - 2:30 PM
- Saturday: 10:30 AM - 2:30 PM
- Sunday: 10:30 AM - 2:30 PM

Located at 8 New St, Ledbury, HR8 2DX, the Ledbury Community Hub aims to become the heart of the community, offering a space for people to come together, connect, and enjoy each other's company.

OVER 90 HOT MEALS SERVED TO FAMILIES IN MARCH

In March, Ledbury Town Council and The Community Hub collaborated to host four Winter of Wellbeing Sessions. Supported by a grant from Herefordshire Council, the aim was to provide a warm space and hot meals to families in need during the colder months.

With the help of chef Jake, The Community Hub cooked up a storm, providing nutritious plant-based food that was a real hit! In total, over 90 meals were served, making the initiative a resounding success!

Each session featured a selection of games and workshops curated by Holly Simms. From print workshops to team-building days, families had a blast participating in the activities.

The Winter of Wellbeing Sessions were not only a lifeline for those in need but also a wonderful opportunity for the community to come together, share a meal, and enjoy each other's company.

DATES FOR YOUR DIARY

The Hub have some wonderful new regular meetups joining the schedule in May.

Folk Music meet up - 1st Sunday of every month, 12.30PM

Craft Group - 2nd Saturday of every month, 10.30AM

Sew-cial, sewing meet up - every Thursday, 10.30AM

All open to all abilities and ages



We're designing our new Volunteer Project
and we need YOU!



If you have experience of volunteering or would like to share
your ideas and be part of this new project please get in touch



Email: debhealthwatchherefordshire@gmail.com
Tel: 01432 277044



LEDBURY CARNIVAL GOES GOLD

CELEBRATING THE 50TH CONSECUTIVE YEAR OF LEDBURY CARNIVAL

Join the community as they come together to
celebrate 50 years of Ledbury Carnival and create
unforgettable memories.

As part of the celebrations, Ledbury Carnival is inviting
trade stalls, crafters, and local not-for-profit groups to
join the fun and have a pitch at the market. It's a
fantastic opportunity to showcase your products, crafts,
or organisation to the local community.

For more information contact the Association on the
below contact details:

contactus@ledburycarnival.co.uk
07858599037

DATES FOR YOUR DIARY APRIL - JUNE 2024



wild_about_ledbury Ledburytowncouncil

- Saturday 27 April - Ledbury & Avonbank Brass Band Concert @ Church of St Michael and All Angels 7:30pm onwards
- Friday 3rd May - Ledbury's got Talent @ John Masefield High School 7:00pm onwards
<https://www.ticketsource.co.uk/.../2024.../19:00/t-yakkeok>
- Tuesday 7th May - Hereford Local Plan consultation @ the Burgage Hall 4:00pm-7:00pm
- Saturday 8th June - Ledbury Community Day in and around the town 10:00am-2:00pm
<https://www.ledburycommunityday.org.uk/>
- Saturday 8th - Sunday 9th June - Hellen's Garden Festival @Hellens Manor 10:00am-5:00pm
<https://hellensgardenfestival.co.uk/>
- Saturday 8th - Sunday 16th June - Great Big Green Week activities (More information to be released on the Town Councils website soon)

LEDBURY
POETRY

FESTIVAL

28TH JUNE – 7TH JULY 2024

Fleur Adcock

Simon Armitage

Liz Berry

Imtiaz Dharker

Jackie Kay

Zaffar Kunial

Paul Muldoon

A.E. Stallings



Ledbury Poetry Festival Booking is now open

Ledbury Poetry Festival runs 28th June – 7th July this summer. Prize-winning poets, discussion and debate, international voices and workshops with poetry slams, performance and music to round off your day. Live and online, everyone is welcome to create and celebrate.

Explore the programme at www.ledburypoetry.org.uk

Ledbury's GREEN WEEK



Ledbury Community Day

**Saturday 8 June 10:00am -
2:00pm**

In and around Ledbury

A fantastic opportunity for local groups to show what they do and encourage participation from residents and visitors. A celebration of Ledbury and District's excellence.

More information can be found here:

<https://www.ledburycommunityday.org.uk/>

Wild Play Workshop

**Saturday 8 June 10:30am -
12:30pm**

Master's House HR8 1EA

As part of this year's Great Big Green Week, we are excited to welcome WildPlay back to Ledbury Library!

Enjoy FREE drop in crafts and get creative with nature. There will also be opportunity to learn all about Herefordshire Wildlife Trust. Suitable for all ages and no booking required. This event is sponsored by Ledbury Library Development Group

Photography Exhibition

**Saturday 8 June 10:00am -
2:00pm**

Ledbury Methodist Church HR8 2AA

Enjoy a wonderful opportunity to view a display of photos taken by local residents in Ledbury on the theme of sustainability. Browse the collection and enjoy free teas and coffees.

Ledbury's Litterpick

Sunday 9 June 2024 12:00 onwards

in and around Ledbury

Join us for a big tidy up of the Town and surrounding areas. Tea, coffee and cake will be available for all volunteers afterwards. Meet under the Market House at 12:00 to collect bags and litter picking equipment. Please contact admin@ledburytowncouncil.gov.uk to register interest.

The National Food Conversation

**Monday 10 June 2024 7:00pm
onwards**

Burgage Hall HR8 1DW

Learn from local food producers what challenges face them in growing and harvesting our food. Learn what concerns your neighbours locally and people in other parts of the country.

Be at the start of Herefordshire's Food Conversation, part of a national campaign to find ways to overcome shortfalls in current food production and supply chains, and how you can help. To tempt you we'll have some local food and drink tastings from 7pm, with the main event featuring videos and speakers from 7.30pm.

**THE GREAT
BIG GREEN**

Mayors Sustainable Coffee Morning

Wednesday 12 June
10:30am-12noon

St
Katherines
Hall
HR8 1DZ

You're invited to join the Mayor of Ledbury, Councillor Stephen Chowns, for a Sustainable Coffee Morning! This year's Great Big Green Week theme is "Let's Swap Together for Good." Please feel free to bring along cakes or biscuits to share as we come together to celebrate sustainability and community.

Movie Night

Thursday 13 June 18:30pm
onwards

Heritage
Centre
HR8 1DN

Ledbury Places is hosting a film evening showing the thought-provoking film RIVER.

The documentary film explores through narrative by Willem Defoe and music by several artists, including Radiohead, the role man has played in harnessing the power of rivers across the world. Rivers have shaped us but have human projects overwhelmed the world's rivers?

The documentary explores the majestic yet fragile rivers on our planet. Watch the trailer and then come and join us to hear the whole story.

https://www.imdb.com/title/tt14222534/?ref=ext_shr_lnk

Our film evening will be on THURSDAY 13TH JUNE from 18:30 for light refreshments, with the film commencing at 19:00 at The Upper Floor of The Old Grammar School, Church Lane, Ledbury. **Tickets are £5.00 and available from The Courtyard.**

**£5 per
person**

Willow Weaving Workshop

Saturday 15 June 9:30-4:30

The Market
House
HR8 1DS

Join us for a creative Willow Workshop with local artist Helen Munday! Explore the art of willow weaving through engaging sessions for both kids and adults. Here's the outline of the day's activities:

9:30-10:30 AM - Kids Session: Birdfeeders
10:45 AM-12:45 PM- Adults Session: Willow Platters
1:45-2:45 PM - Kids Session: Stars and Wands
3:00-4:30 PM - Adults Session: Birdfeeders

Each session is limited to 8 participants, so be sure to reserve your spot early.

call 01531 632306 or email admin@ledburytowncouncil.gov.uk
£5 per adult and free for kids!

**FREE
for kids**

**£5 per
adult**

**THE GREAT
BIG GREEN
WEEK**



Let's swap together for good